



## McKernan Child Development Centre

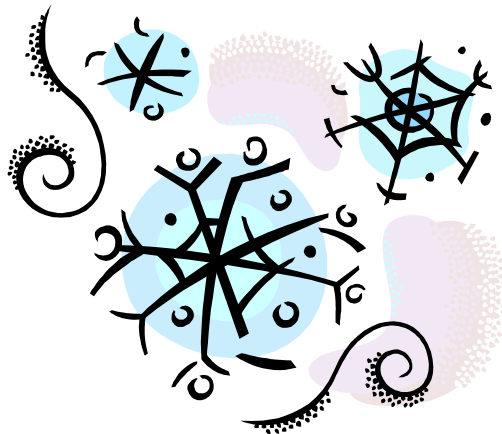
11125 - 76 Avenue NW  
Edmonton, AB T6G 0J9  
780-414-0421

### January 2012 Newsletter

Happy New Year and Welcome Back! We started the New Year on a quiet note with just a few playmates for the staff joining us on Jan 2. Staff were pleased to have the time to catch up on portfolios, toy cleaning, prep and planning while taking turns playing with our little group! We hope that you all enjoyed your Christmas vacation and spent lots of time building new family memories. It is great to be back!

We are happy to welcome Leah- our new cook, to the team this month. Yeon will also be starting up again with the group too. She will be taking over the naptime support role for the year. We hope that all families will be able to join us for the **parent meeting this month** on **Jan 9**. We will be reviewing programming plans and updates to the parent handbook at that time. Sam (MBC executive pastor) will also join us to review updates to the church's plans for a new building that includes a new daycare space! As per usual, we welcome you to speak with us if you have any questions or concerns regarding our program or your child. We look forward to another great year with you all! Thanks for your support of our program!

~Kristy



### January Calendar

Jan 2- Daycare re-opens

Jan 9- Parent Meeting @ 7pm

Jan 12- Scholastic orders Due

Jan 27- return date for ASQs

Feb 14-Valentine's Day- wear red!

Feb 20- Family Day- CLOSED

Feb 21- Staff PD DAY- Closed



# HAPPY NEW YEAR!

### **\*CURIOSITY \* Room**

Welcome back! Please check with staff to see if your child needs any extra diapers or wipes for their supply at the daycare. As well, please be sure to bring extra clothes and appropriate outerwear for them to enjoy their outside playtime each day.

### **WONDER \*Room**

Milva and Veronica hope that you had a great Christmas break and welcome everyone back for 2012. They would like to remind parents to be sure to sign for the week on the attendance records so that they keep all their records accurate. Be sure to check if you have signed before leaving each Friday. Thanks! Please check your child's supply of extra clothes and diapers to see if you need to bring in extras too.

### **\*IMAGINATION\* Room**

Welcome to Elliott who joined the group this month! All of our friends are 3 now so we will soon have 16 children in this room. Just a reminder to everyone about Friday's favorite toy day- Your child is welcome to bring their favorite toy on **Fridays only**. Your child can choose any toy they wish to share with the group but please leave potentially violent toys (such as swords, guns etc) at home. Ana and Renee would also like to remind all parents to sign the attendance records each week. Please check on Friday that your child's records are accurate and have been signed for before you leave that day. Thanks!

### **FOR EVERYONE:**

- ★ Thank you to all the parents for your generous gift presented to the staff at our potluck! It is truly appreciated and we look forward to using this gift together. We appreciate your support of the work we do and it is a pleasure to care for your children. ☺
- ★ **It is important that all children be picked up by 5:30pm every day.** All children and parents should be out of the building by closing time (5:30) as that is when the staff's shifts end for the day and our insurance will no longer cover for children to be in the building after that time. We appreciate your cooperation with this and thank you for respecting the staff members whose shift ends at that time. In the event that you are late for picking up your child- a late fee will apply. Please speak with Kristy or Ulrika if you have any questions. Thanks.
- ★ A parent meeting will be held on **January 9<sup>th</sup>**. It will be held upstairs at **7pm**. Adults only please. Everyone should plan to attend.
- ★ Scholastic Orders are due on **Jan 12**. Please make cheques payable to **Scholastic Canada**. **\*\*NO CASH WILL BE ACCEPTED.\*\***
- ★ The **staff PD day** will be held on **Feb 21**. **The daycare will be closed on Monday for Family day as well and will re-open on Wed. Feb 22, 2012.**

